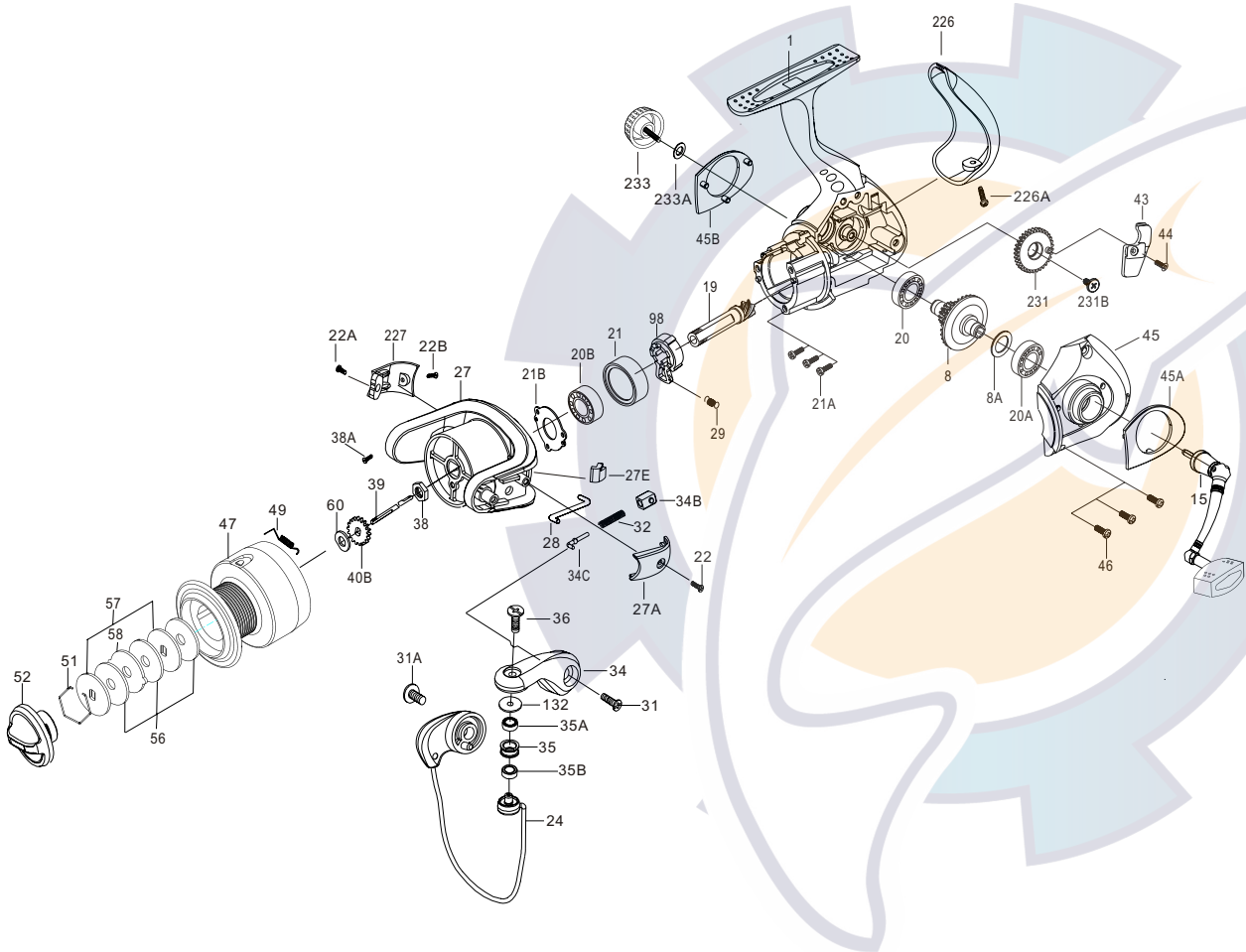




PARTS LIST FOR MODEL SV2000



KEY

NO.	DESCRIPTION	PART NO.
1	HOUSING	001 2000SV
8	Main Gear Assembly	008 2000SV
8A	Main Gear Shim	008A 500CV
15	Handle Assembly	015 2000SV
19	Pinion Gear	019 2000SV
20	Housing Ball Bearing	020 500CV
20A	Housing Cover Ball Bearing	020A500CV
20B	Pinion Ball Bearing	020B2000SV
21	Collar	021 2000SV
21A	Bearing Mounting Screw(3 req.)	021A2000SV
21B	Ball Bearing Fixed Washer	021B2000SV
22	Ball Arm Cover Screw	022 2000SV
22A	Side Cover Screw	022A2000SV
22B	Side Cover Screw	022B2000SV
24	Bail Wire	024 2000SV
27	Rotor Cup	027 2000SV
27A	Bail Pivot Cover	027A2000SV
27E	Balance Weight	027E2000SV
28	Trip Lever	028 2000SV
29	Spring	029 2000SV
31	Bail Arm Screw	031 2000CV
31A	Bail Wire Screw	031 2000CV
32	Bail Spring	032 2000SV
34	Bail Arm	034 2000SV
34B	Pivot Guide	034B2000SV
34C	Pivot Arm	034C2000SV
35	Line Roller	035 2000SV
35A	Line Roller Ball Bearing	035A2000CV
35B	Line Roller Bushing	035B2000SV
36	Bail Stud Screw	036 2000SV
38	Rotor Nut	038 2000CV
38A	Rotor Nut Screw	038A2000CV
39	Spool Shaft	039 2000SV
40B	Click Ratchet	040B2000CV
43	Crosswind Block	043 2000SV
44	Crosswind Block Screw	044 2000SV
45	Housing Cover	045 2000SV
45A	L.S.Rear cap	045A2000SV
45B	R.S.Rear cap	045B2000SV
46	Housing Cover Screw(3 req.)	046 2000CV
47	Spool Assembly	047 2000SV
49	Spool Click Spring	049 2000CV
51	Retaining Ring	051 2000CV
52	Drag Knob	052 2000SV
56	Friction Drag Washer(3req.)	056 2000CV
57	Keyed Washer(2 req.)	057 2000CV
58	Drag Washer Earred	058 2000CV
60	Thrust Washer	060 2000CV
98	Clutch Retainer	098 2000SV
132	Roller Washer	132 2000CV
226	Rear Cap	226 2000SV
226A	Rear Cap Screw	226A2000SV
227	Cam Cover	227 2000SV
231	Crosswind Gear	2312000SV
231B	Crosswind Gear Screw	231B2000SV
233	Bearing Cover	233N2000CV
233A	Bearing Cover Washer	233A2000SV